

Light efficiency:

37 Lumen/Watt

Light quality:

CRI: 66.9

Color temperature:

8063 K

Output: 14016 lm

Peak: 103444 cd

Power: 375 W

PF: 1.0

No photo

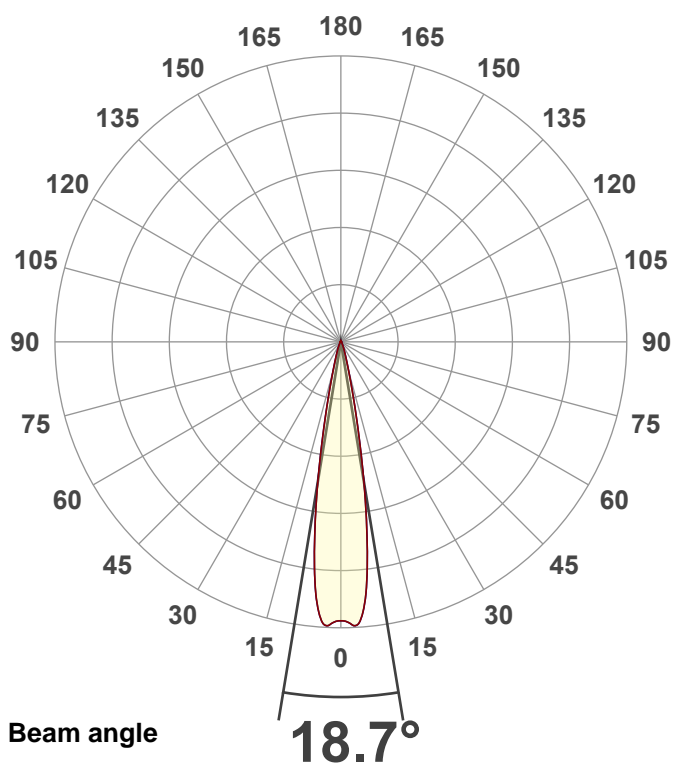
Product name:

40 Hex Panel IP (Full On)

Item number:

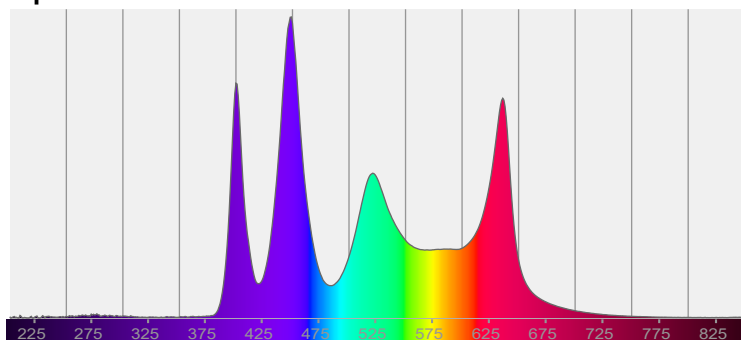
Date and time:

10/9/2025 4:21:20 PM



CIE 1931
x: 0.304
y: 0.277

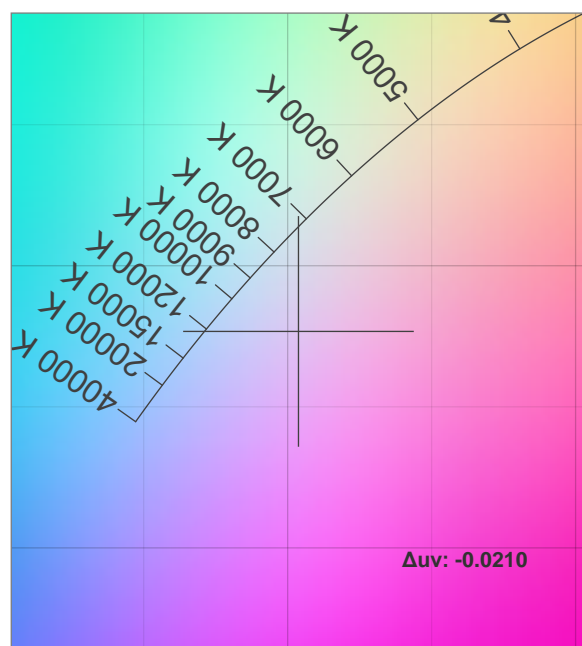
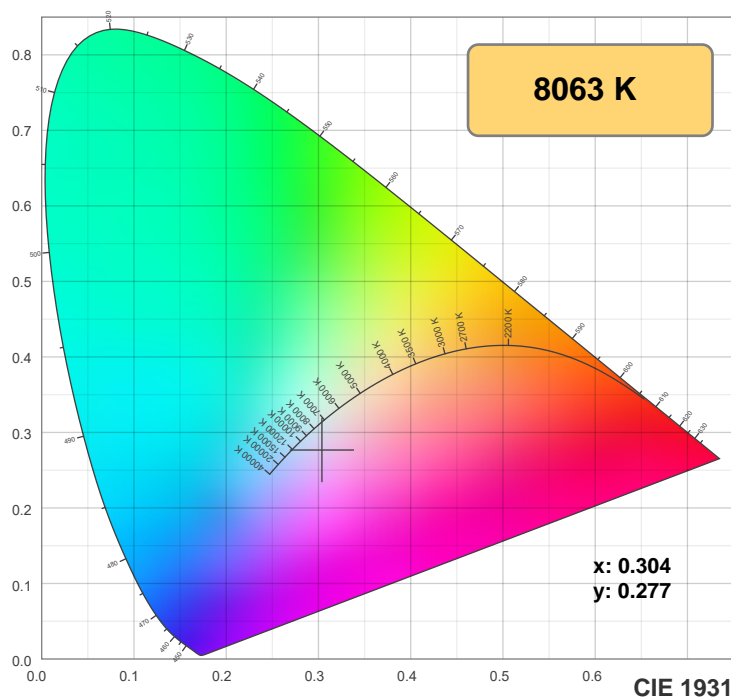
Spectra



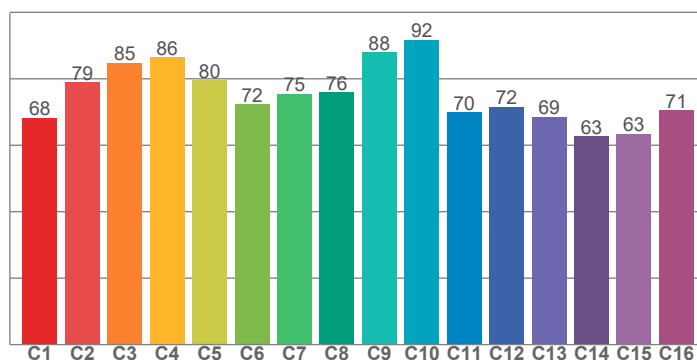
Power

Voltage: 115 V
Current: 3.26 A
Frequency: 0 Hz

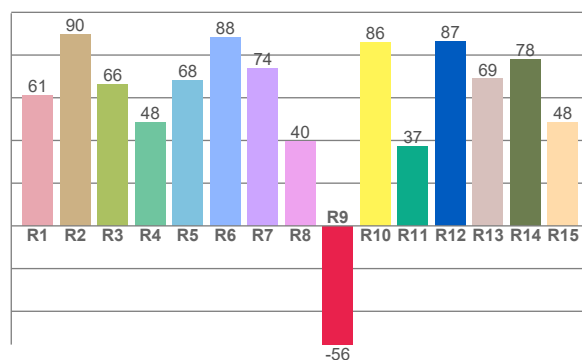
Color details



TM-30: 77.2



CRI: 66.9 (R1-R8)



CRI R values, only R1-R8 are used to calculate final CRI value

R1	R2	R3	R4	R5	R6	R7	R8	R9	R10	R11	R12	R13	R14	R15
61.3	89.5	66.1	48.4	68.1	88.3	73.9	39.5	-55.6	85.8	37.2	86.5	68.9	77.8	48.4

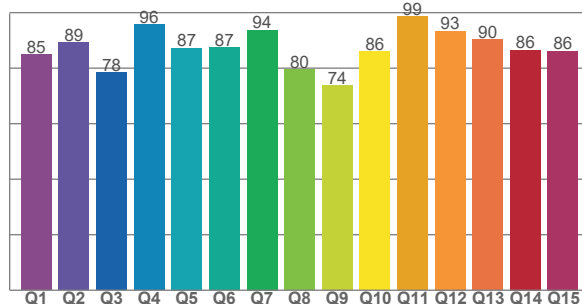
TM30 C values, 16 binned values out of total of 99 C values

C1	C2	C3	C4	C5	C6	C7	C8	C9	C10	C11	C12	C13	C14	C15	C16
68.2	78.9	84.9	86.4	79.5	72.4	75.5	75.9	88.0	91.8	69.9	71.5	68.6	62.7	63.5	70.6

CQS Q values

Q1	Q2	Q3	Q4	Q5	Q6	Q7	Q8	Q9	Q10	Q11	Q12	Q13	Q14	Q15
85.0	89.2	78.5	95.7	87.2	87.5	93.8	79.5	73.8	85.9	98.6	93.4	90.4	86.5	86.2

CQS: 85.9



Color parameters

Color temperature	Color rendering index	Red component	Color fidelity	Color gamut	Color quality scale	Color coordinate cie 1931	Color coordinate cie 1931	Color coordinate	Color coordinate	Color deviation from black body
CCT	CRI	CRI R9	TM30 Rf	TM30 Rg	CQS	x	y	u	v	Δuv
8063 K	66.9	-55.6	77.2	120.3	85.9	0.304	0.277	0.213	0.291	-0.0210

TM-30 details

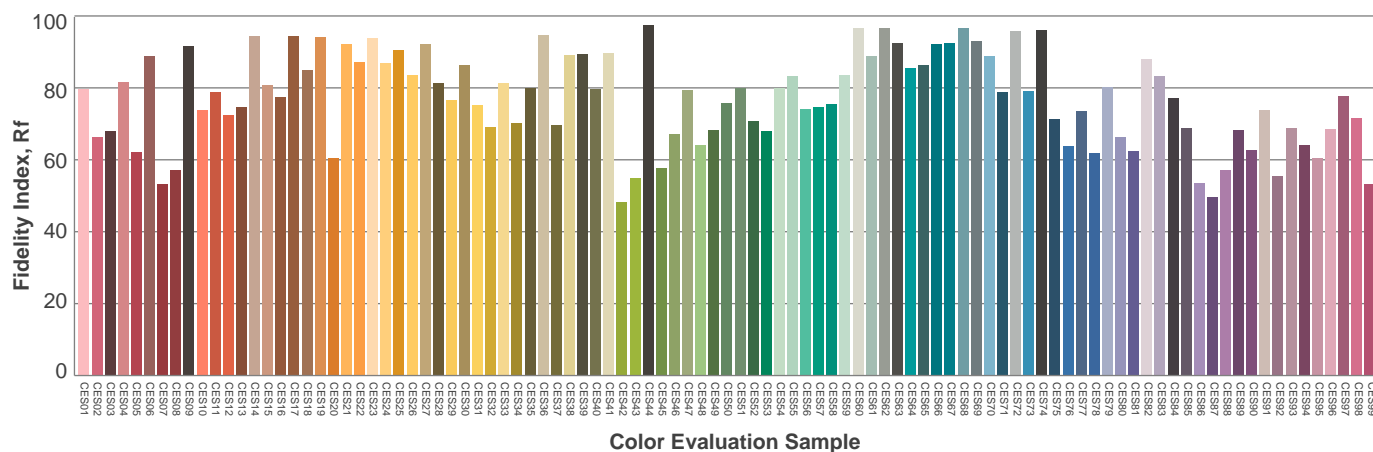
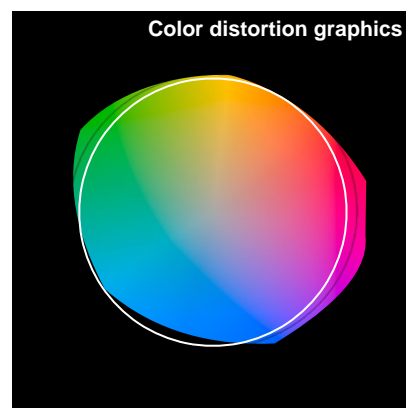
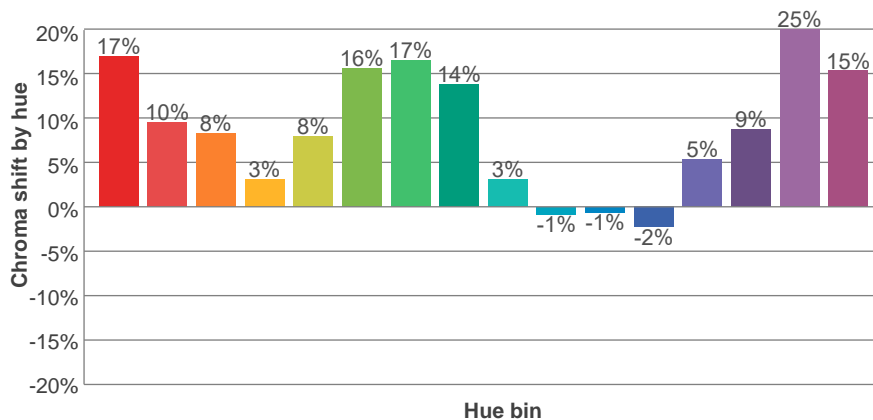
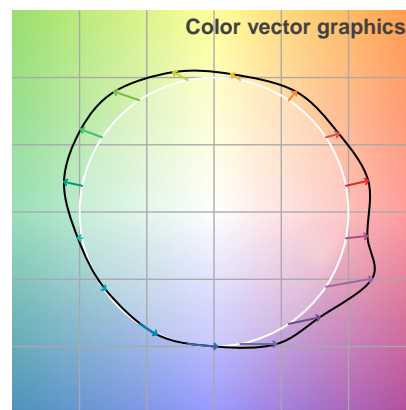
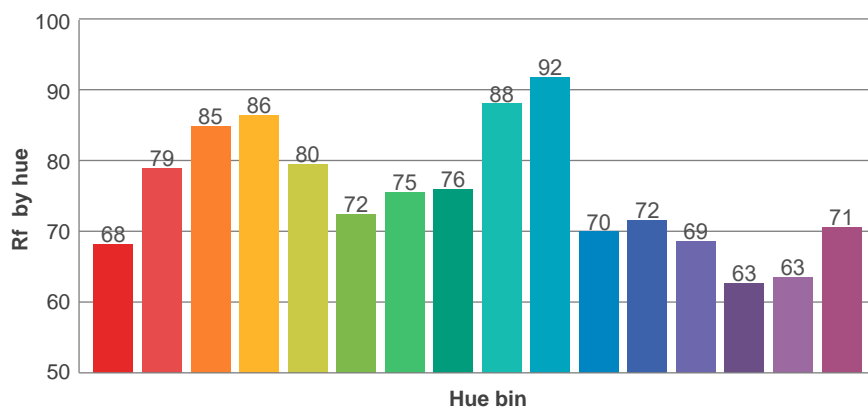
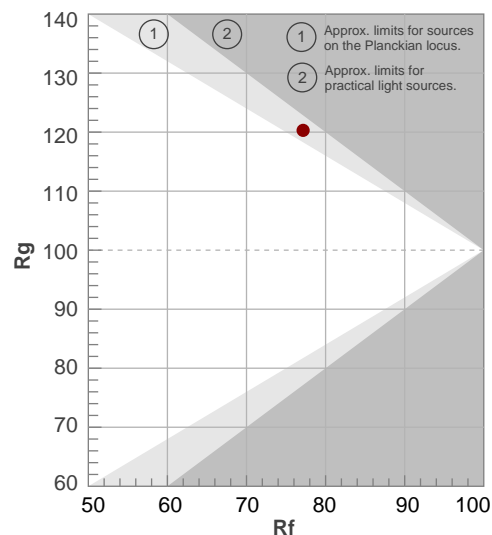
Rf 77.2

Fidelity index Rf

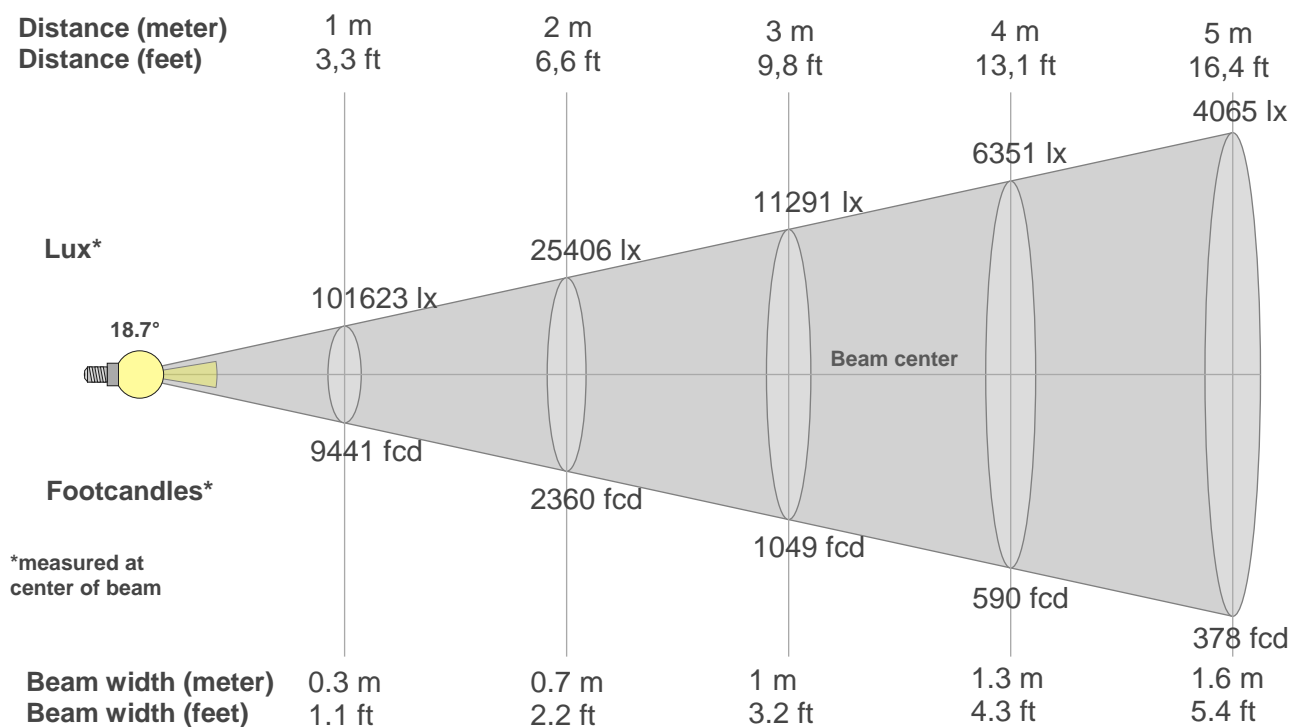
Rg 120.3

Gamut index Rg

Hue Bin	R _f	Shifts (%)	
		Chroma	Hue
1	68	17%	0%
2	79	10%	-3%
3	85	8%	-1%
4	86	3%	7%
5	80	8%	9%
6	72	16%	12%
7	75	17%	4%
8	76	14%	0%
9	88	3%	-1%
10	92	-1%	3%
11	70	-1%	15%
12	72	-2%	22%
13	69	5%	26%
14	63	9%	22%
15	63	25%	24%
16	71	15%	5%



Beam details



Beam intensities from 1-20m

1m	2m	3m	4m	5m	6m	7m	8m	9m	10m	11m	12m	13m	14m	15m	16m	17m	18m	19m	20m
3.3ft	6.6ft	9.8ft	13.1ft	16.4ft	19.7ft	23ft	26.2ft	29.5ft	32.8ft	36.1ft	39.4ft	42.7ft	45.9ft	49.2ft	52.5ft	55.8ft	59.1ft	62.3ft	65.6ft
101623lx	25406lx	11291lx	6351lx	4065lx	2823lx	2074lx	1588lx	1255lx	1016lx	840lx	706lx	601lx	518lx	452lx	397lx	352lx	314lx	282lx	254lx
9441.1fcd	2360.3fcd	1049fcd	590.1fcd	377.6fcd	262.3fcd	192.7fcd	147.5fcd	116.6fcd	94.4fcd	78fcd	65.6fcd	55.9fcd	48.2fcd	42fcd	36.9fcd	32.7fcd	29.1fcd	26.2fcd	23.6fcd

Intensities in 0° c-plane

0°	1°	2°	3°	4°	5°	6°	7°	8°	9°	10°	11°	12°	13°	14°	15°	16°	17°	18°	19°
102k	102k	103k	103k	101k	97k	89k	79k	67k	56k	44k	34k	26k	19k	14k	11k	9k	7k	6k	5k
100%	100%	101%	102%	100%	95%	88%	78%	66%	55%	44%	33%	25%	19%	14%	11%	9%	7%	6%	5%

Intensities in 90° c-plane

0°	1°	2°	3°	4°	5°	6°	7°	8°	9°	10°	11°	12°	13°	14°	15°	16°	17°	18°	19°
102k	102k	103k	103k	101k	97k	89k	79k	67k	56k	44k	34k	26k	19k	14k	11k	9k	7k	6k	5k
100%	100%	101%	102%	100%	95%	88%	78%	66%	55%	44%	33%	25%	19%	14%	11%	9%	7%	6%	5%

Intensities in 180° c-plane

0°	1°	2°	3°	4°	5°	6°	7°	8°	9°	10°	11°	12°	13°	14°	15°	16°	17°	18°	19°
102k	102k	103k	103k	101k	97k	89k	79k	67k	56k	44k	34k	26k	19k	14k	11k	9k	7k	6k	5k
100%	100%	101%	102%	100%	95%	88%	78%	66%	55%	44%	33%	25%	19%	14%	11%	9%	7%	6%	5%

Intensities in 270° c-plane

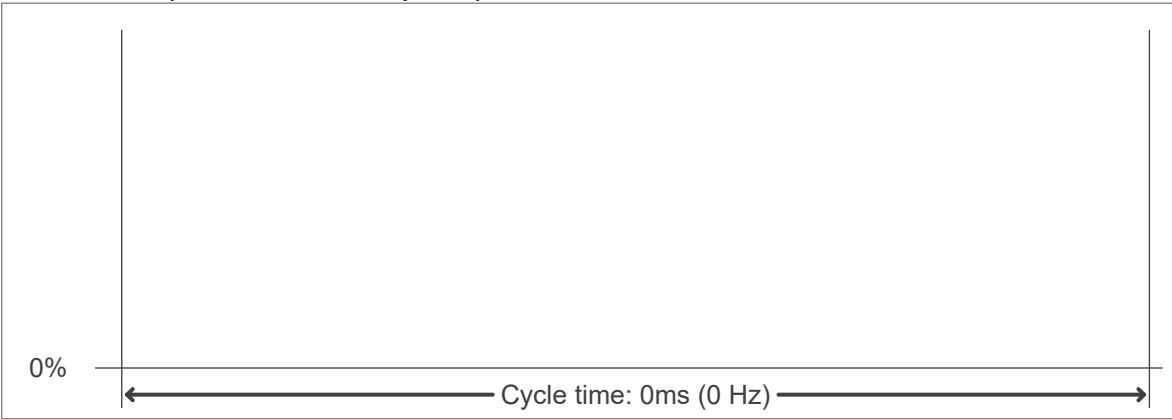
0°	1°	2°	3°	4°	5°	6°	7°	8°	9°	10°	11°	12°	13°	14°	15°	16°	17°	18°	19°
102k	102k	103k	103k	101k	97k	89k	79k	67k	56k	44k	34k	26k	19k	14k	11k	9k	7k	6k	5k
100%	100%	101%	102%	100%	95%	88%	78%	66%	55%	44%	33%	25%	19%	14%	11%	9%	7%	6%	5%

Beam angle 50%	Field angle 10%	Cutoff angle 2,5%	Intensity ratio in 120° cone	Intensity ratio in 90° cone
18.7°	30.6°	46.9°	95.4%	92.3%

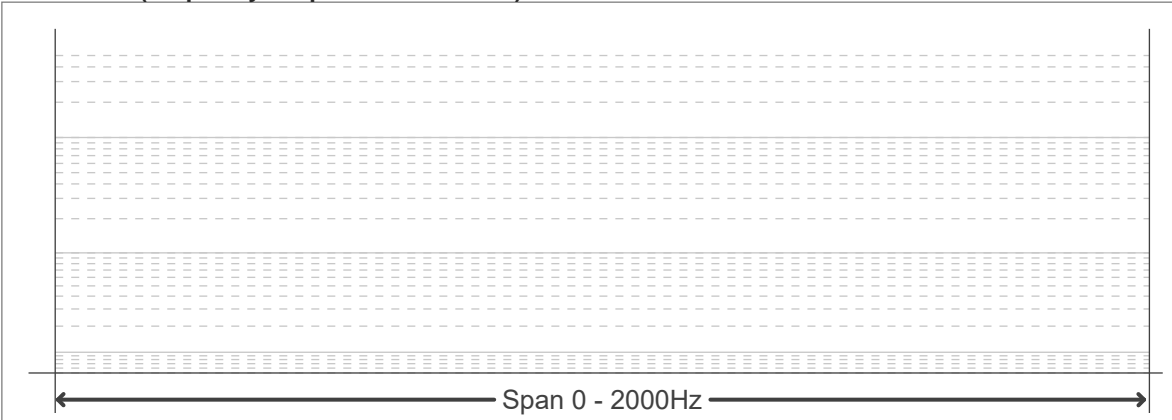
Flicker curve (complete sampled flicker signal)



Flicker frame (frame of one flicker period)



Flicker FFT (frequency scope of flicker curve)



Flicker results:

Flicker frequency:		n/a Hz	
Flicker index:	n/a	JA8/10 40Hz	n/a %
Flicker percentage:	n/a %	JA8/10 90Hz	n/a %
SVM: (Visual flicker)	n/a	JA8/10 200Hz	n/a %
PstLM	n/a	JA8/10 400Hz	n/a %
Mp	n/a	JA8/10 1000Hz	n/a %

Flicker conditions:

Sample rate:	n/a samples/second
--------------	--------------------